



PREMIER SIGN SYSTEMS LLC - A FULL SERVICE SIGN AND AWNING COMPANY



PREMIER SIGN SYSTEMS LLC - A FULL SERVICE SIGN AND AWNING COMPANY

We Specialize

in taking your project
from concept to completion

Based in Rochester, New York our company has experienced continued annual growth in sales and service in the Western New York Region since our start in 2004. With over 200 years of combined workforce experience in the sign and awning manufacturing and service industry we can provide exceptional quality at low cost to our customers. We are also a MBE (Minority Business Enterprise).

Please take a look at some of our many sign and awning projects and you are sure to choose Premier Sign Systems, LLC to drive business to your door. Contact us for a tour of our 24,000 sq.ft. building and let us show you what we can do!



Our Signs Sell Your
Business

PREMIER SIGN SYSTEMS LLC - A FULL SERVICE SIGN AND AWNING COMPANY



Survey and Permitting Services

We understand the importance that a site survey can play in any sign project. Knowing, ahead of time, what is involved in getting your sign installed properly, can be the difference between a successful project and a nightmare.

Sign permits are no different. The acquisition of the necessary permits can be some of the most challenging aspects of a sign project and requires thorough preparation, attention to detail and a working knowledge of the sign codes involved. Our company is licensed and bonded in any municipality we work in.

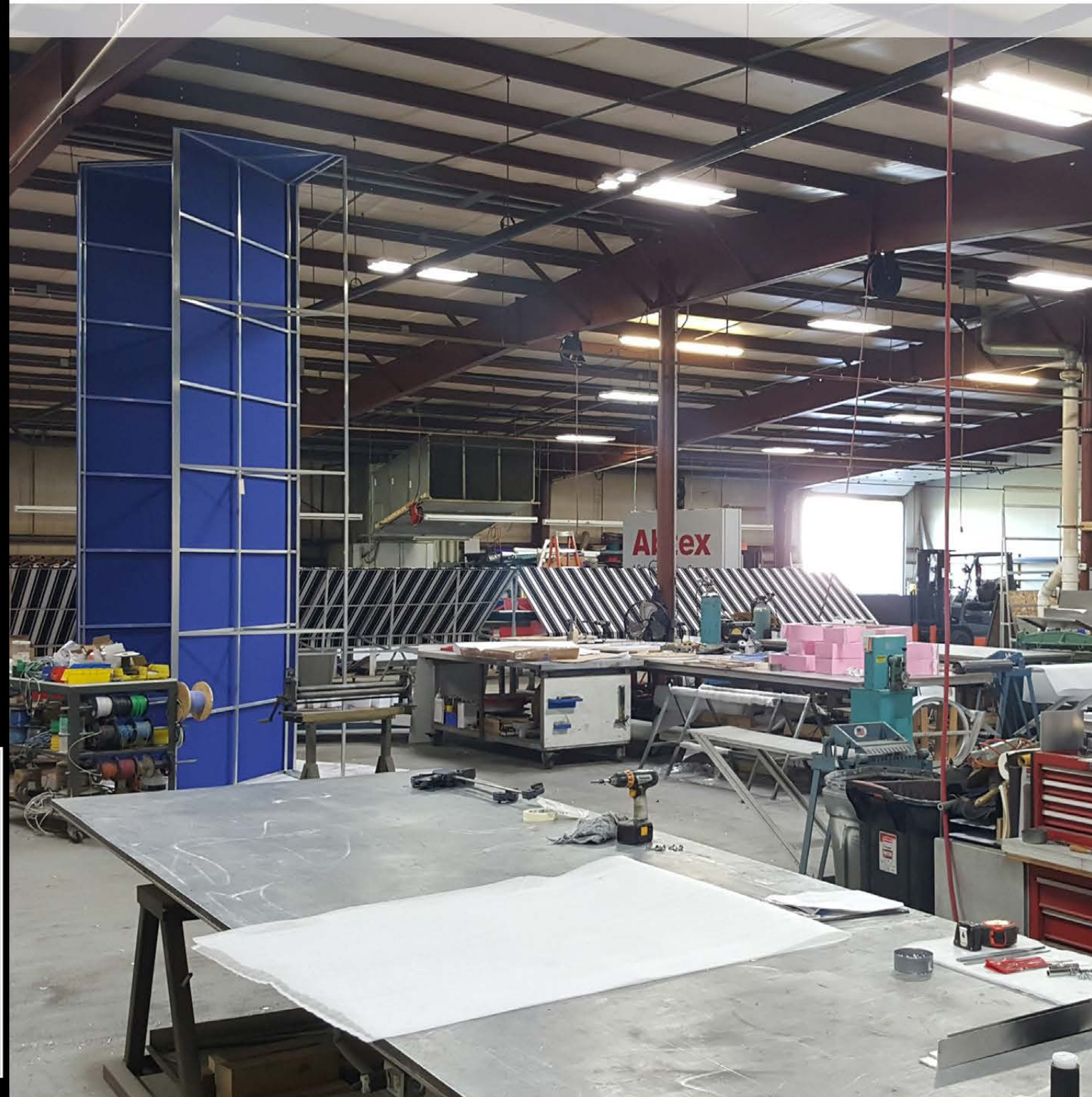
Our project managers oversee the complexities of everything from sign surveys, recommendations, permits, manufacturing and installation. This means you have the time to focus on growing your business. As part of our sign project management services, we offer personal consultation for all your signage needs.

Manufacturing Services

Sign making is more than a process. It's an art. As your sign maker, we take great care in designing and creating high quality signs tailored to meet your individual needs.

We start by using the highest quality materials and the best technology available. Our state of the art equipment ensures that your sign will be manufactured to meet exacting specifications.

Let us do the work, and our promise to you will be a high-quality, high-impact sign that helps your business grow.



Design

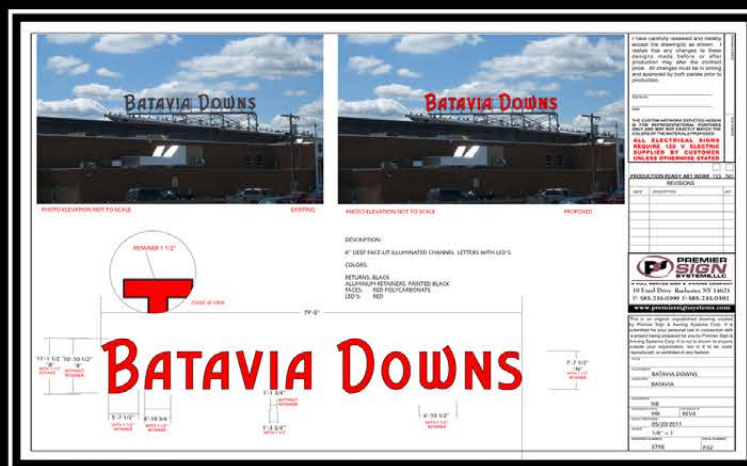
Our Design team is here to take your vision and present a professional design that can incorporate your logo, company colors, and message.

Satisfaction

We'll do it right. The first time. We've built our reputation by providing the best customer service and exceeding client expectations.

Quality

Combine the highest quality materials with our years of sign making experience and you know that your sign will be made right.



- Dimensional Letters
- Channel Letters

- Monument Signs
- Cabinet Signs
- Parking Signs

- Electronic Signs
- Large Scale Banners
- Wall Signs

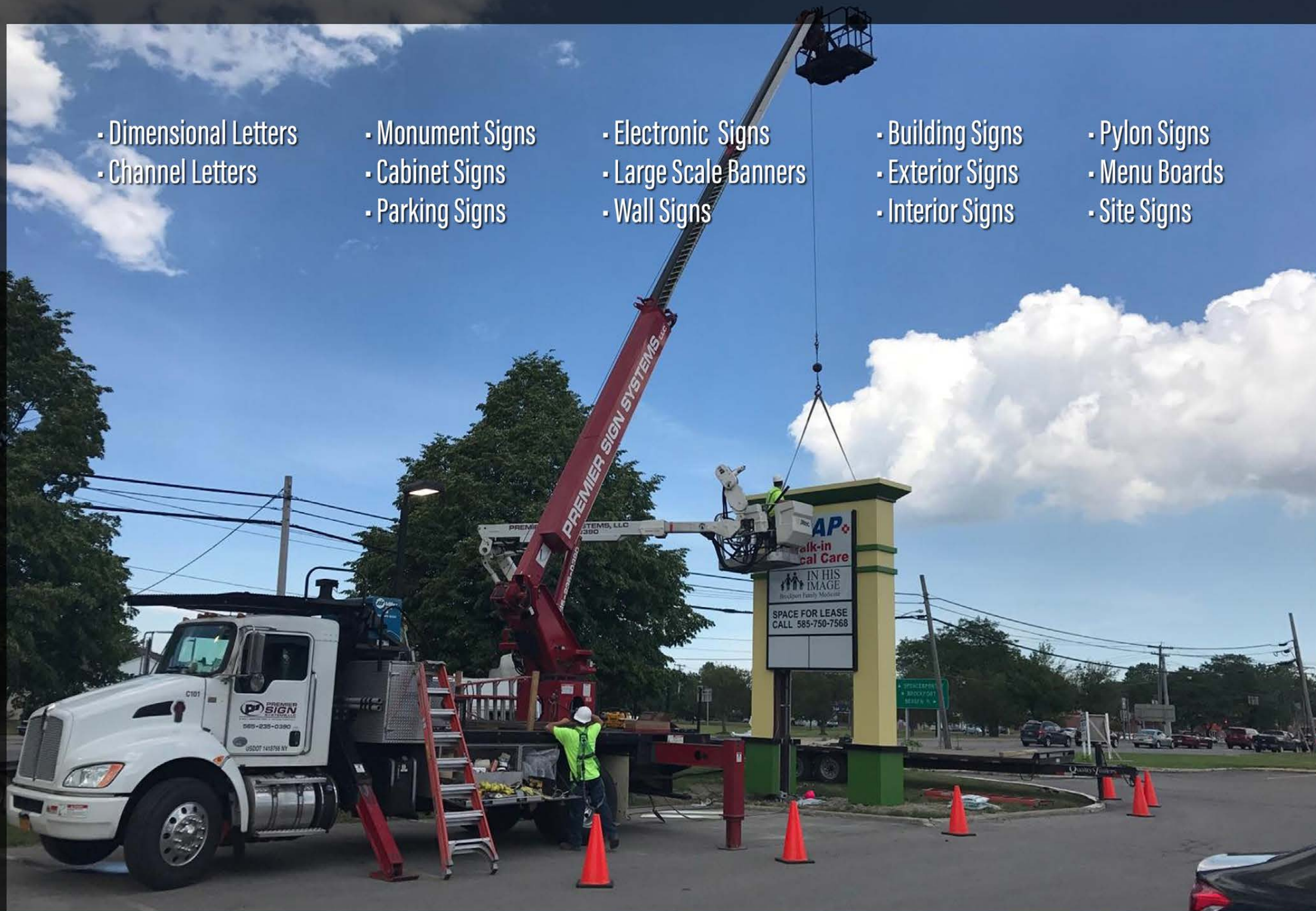
- Building Signs
- Exterior Signs
- Interior Signs

- Pylon Signs
- Menu Boards
- Site Signs

Installation Services

Years of experience and our own crew of licensed professionals afford us the knowledge needed to deliver the results you're looking for. Our work complies with all of the local and state code requirements, ensuring that the job is done right the first time, every time.

All of your installation needs can be handled by our installation experts. Our technicians arrive on-site with a fully equipped vehicle to get the install job done with quality workmanship. With a diverse fleet of service vehicles, and the latest tools and technology, we are ready to provide you with top-notch installation service for any sign.



Maintenance and Repair Services

Clean, functioning signs and lighting can increase customer traffic and instill a sense of security around your business. After all, the first impression many customers may have about your business is your sign.

Our trained and licensed technicians arrive on-site with a fully equipped vehicle to get the job done. They will diagnose any problems quickly and deliver fast, accurate service to get your sign back in working condition. All of our technicians are provided with mobile communication, so that they can effectively communicate with our main office and you to ensure that we make the repairs needed as quickly as possible.

General Repair
Sign Cleaning
Scheduled Maintenance



Lighting Services

Premier Sign Systems, LLC also services parking and exterior building flood lights. From Fluorescent to High Pressure Sodium to Mercury Vapor we are experts at servicing exterior illumination. We can diagnose and fix many standard lighting problems.

Our crane and bucket equipment can reach sixty feet to the most towering of parking lot lights and our crews have the knowledge needed to repair the most complex lighting systems. We will perform electrical testing of your ballasts, transformers, and fixtures to ensure everything is properly wired and running correctly.



Dimensional Letters (Illuminated)

Visible by day, luminous at night, channel letters provide great depth and precision to your company's sign.

Channel letters are also known as "internally illuminated letters". This description says it all in that each letter is generally lit from the inside with light shining through the plastic sign face or out the back of the letter (called a halo-lit, or reverse channel letter). As is the case for most of the signs we offer, channel letters are custom made from metal and plastic, and are commonly illuminated with LED lighting (very efficient) or neon tubing.

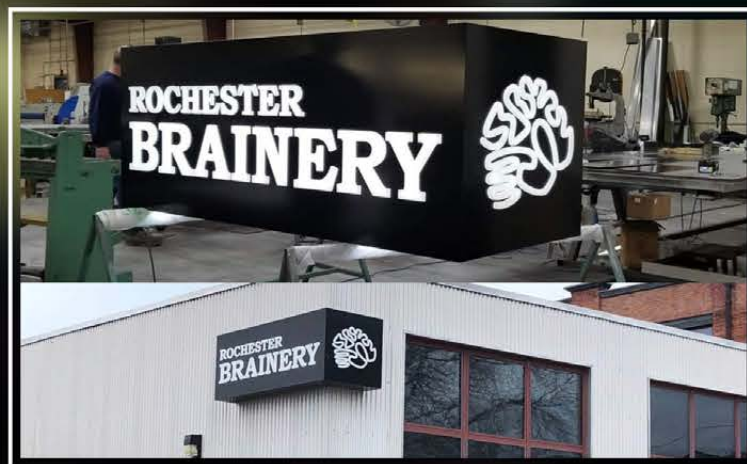
Standard Channel Letters
Exposed Neon Letters
Backlit Letters





Cabinet Signs are Perfect for:

- Businesses
- Internal Signage
- Churches
- Service Centers
- Schools
- Much More!



Cabinets

Illuminate your brand and location, day and night, using lighted cabinet signs. Also commonly called "wall" or "box" signs, cabinet signs are a traditional form of illuminated signage. Cabinet signs allow for an effective way of utilizing large copy area and eye-popping graphics.

The background of the sign can be the element that illuminates and the copy can be either translucent (lighted) or opaque (non-lighted).

Strong and durable, our cabinet signs can be used when small letter size or graphical elements make the use of channel letters impractical. Depending on the complexity of each individual cabinet, our cabinet signs can be made to fit anyone's budget.

Awnings

Custom-made awnings give your business a truly impressive image. Stand out from the crowd with an inviting, professional treatment to your storefront or restaurant with our specially designed awnings and complementary signage.

Bring life to your building at night by adding back lighting to your awning. Not only are they an extremely effective signage option, illuminated awnings provide security 24 hours a day. Your storefront is bright whenever it's dark, helping your customers find their way at night and discouraging thieves after you close.

Awnings come in a number of styles and sizes, and selecting the correct one can be a bit overwhelming. We'd be happy to help you select the perfect awning type for the exterior of your building.



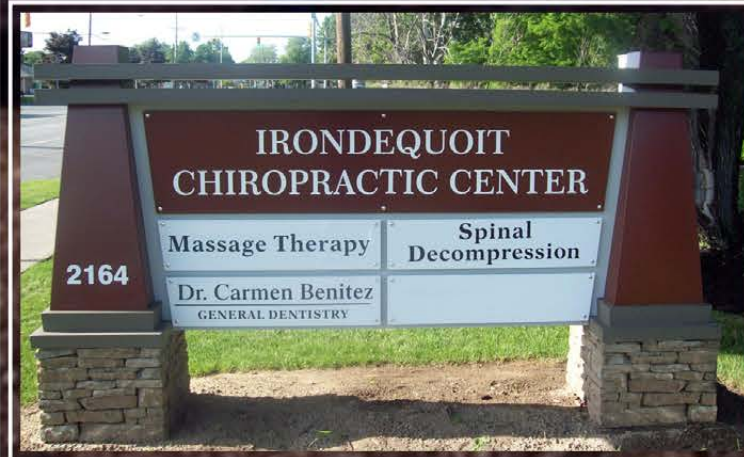
Monument Signs

A monument sign provides an excellent format for street advertising while representing an image of the pride you have in your company.

Typically installed low to the ground, a monument sign is a detached, freestanding sign whose sign surface is attached to a proportionate solid base or structural frame. They can be internally or externally illuminated.

These permanent structures create a professional entrance to your company. They are built from materials that are proven to withstand the elements of nature. Monument signage comes in a variety of shapes and sizes. The goal is to install one that effectively represents your facility.

At Premier Sign Systems we take pride in providing attractive and affordable monument signs, designed to fit your business. Our monument signs can be customized in a variety of ways, including shape, material, and illumination.



Pylon Signs

Pylon signs are often called pole or freestanding signs. Basically they are signs erected on a pole or pylon independent of any building or structure. Since they are typically mounted higher in the air than monument signs, pole signs offer excellent visibility from a distance.

One of the many advantages of pylon signs is to separate your business from the rest along your street, reflecting your company's identity and professionalism. The pole(s) can be covered with an attractive shroud to provide that added dimension (and impact!) to your sign.

Pylon signs are typically illuminated, either internally (most common) or externally. Really looking for maximum impact and message capabilities? Add an electronic message center (LED sign) for an unparalleled eye-catching display!

Dimensional Letters

(Non-Illuminated)

Add some dimension to your signage, literally! Dimensional lettering is an effective way to grab attention and guide customers to your place of business. Exterior dimensional lettering can be installed directly to your building facade and to self-standing signage structures, such as monument signs or other low profile signs.

Dimensional letters are illuminated externally. That is, if you're looking to light up your sign by night, you'll need to consider an external lighting source. If you're looking for maximum impact, and the application warrants it, we recommend that you consider channel letters to internally illuminate your sign to attract attention to your brand, day or night.

Durable, yet economical, our dimensional lettering can be made in varying depths depending on the material you choose.



Popular Materials

- Foam
- Metal
- Molded Plastic
- Vacuum Formed
- Flat cut or laminated acrylic
- Injection molded plastic



Interior Signs

Interior signs can be designed for lobbies, offices, conference rooms, etc. These signs are limited only to your imagination. Materials used and colors selected can all be put together to meet your design and decor needs. They can be designed to match your company identity, or used to spice up the atmosphere in your facility.

While many interior signs are now regulated by ADA (Americans with Disabilities Act) this type of signage must address many other issues, such as flexibility for future expansion, ease of installation and maintenance.

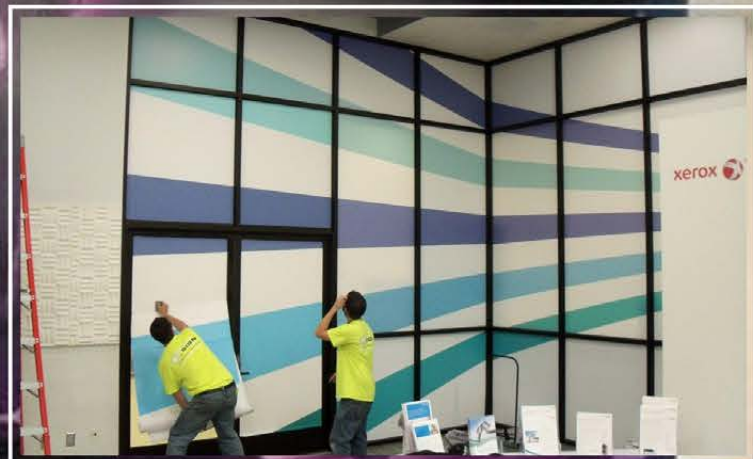
- ADA signs
- Reception signs
- Directory signs
- Wayfinding signs
- Door signs
- Point of Sale signs
- Retail signs
- Floor signs
- Menu Board signs
- Office signs
- Total facility signage
- Corporate identification

Digital Printing (and Banners)

Digital printing utilizes modern technology to digitally transfer your message or image to print with exceptional consistency and quality. Digital printing can be used to produce a number of custom products and can be applied to a variety of surfaces.

Banners can provide quick, cost-effective advertising. A banner may be temporary, and suitable for outdoor or indoor use. Or, it may be of premium quality, designed to stand up to long-term outdoor use.

Our colorful banners are a very effective and affordable signage option. A banner provides a flexible, portable way to put your message in many places. The versatility of our full color banners, whether displayed horizontally, vertically, indoors or out, make them the ideal choice for just about any message you wish to convey.



Vinyl Graphics

Vinyl graphics and lettering is a versatile product that looks classic and professional wherever it's mounted. Vinyl is great for professional logo signs, walls, boats, cars, trucks, and pretty much any smooth surface you can think of. Glossy letters made of durable vinyl material spell out an eye-catching message. Use these to advertise your business on the back of your company car, share a meaningful quote as decor for your walls, or to give your boat an official name.

Available for a variety of short-term / long-term, indoor / outdoor applications, vinyl graphics are an ideal (and cost effective) signage solution! Our in-house vinyl graphic department can assist you with all of your vinyl graphics and lettering needs.

Electronic Display

With almost 20% of the US population moving in a year, new potential customers of varying demographics are always viewing your signs. Electronic displays also known as LED Message Centers or EMC units are a very versatile form of advertising. These bright signs give you the opportunity to display a dynamic message with current content.

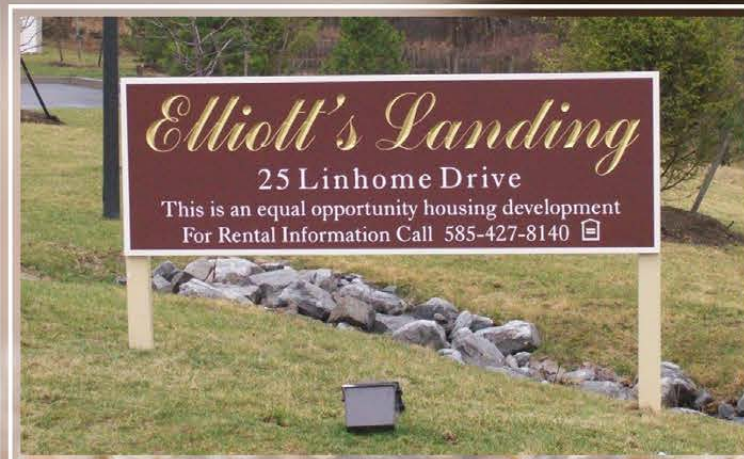
A truly eye-catching visual, electronic message centers often display the current time and temperature as well as utilize animation, color usage and graphic elements to create a visual impact to grab the viewer's attention. Electronic Message Centers provide the quick and effective communication that is essential for every business or organization — whether you run a retail shop, auto dealer, church, school, restaurant or even a bank.



Sandblasted or Routed Signs

A sign represents your image. Image is everything in business. Although sandblasted signs are more expensive than 'quick sign' vinyl sticker style sign solutions, a sandblasted sign will last for decades. A typical vinyl sign has an exterior life expectancy of less than 5 years.

Whether you are looking for a residential entrance sign, development directional signs, business park tenant signs, lobby or reception displays, church reader boards or golf course signage, we can provide a solution that will exceed your expectations and leave a lasting impression.



Engraved Signs

Engraved signs transform ordinary directory and office signage into sophisticated branded signage. Our engraved products come in a variety of materials including metal, acrylic and wood. Our materials can be mounted together to provide a unique look.

Customers seeking engraved awards, plaques and signs are not limited to just text. Our advanced laser engraving technology allows customers to include logos and images on their signage. Simply provide the artwork and we'll take care of the rest.

